

סיכום נזקים לשנת 2012

Health and environmental costs of air pollution from industrial facilities in Europe
Total damage costs in 2012



Total damage costs in 2012:
€ 59 billion (and up to € 189 billion)

Main air pollutants
(NH₃, NO_x, PM₁₀, SO₂, NMVOCs)
€ 40 billion
(and up to € 115 billion)

Carbon dioxide
€ 18 billion
(and up to € 73 billion)

Heavy metals
(As, Cd, Cr, Hg, Ni, Pb)
€ 0.34 billion

Organic pollutants
(benzene, dioxins, furans, PAHs)
€ 0.10 billion



€ 115
per capita
(and up to € 368)

Note: The low-high range of damage cost values reflects a) the different approaches used to value health impacts from air pollution and b) the range of values used to estimate CO₂ related damage costs.

עלות נזקים לפי מפעלי תעשייה במדינות 2008 - 2012

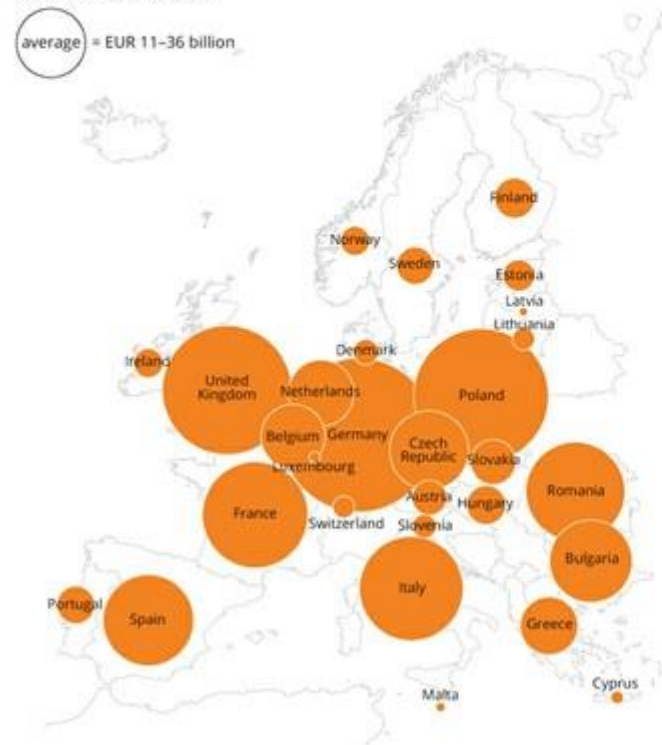
Health and environmental costs of air pollution from industrial facilities in Europe

European Environment Agency 

Damage costs caused by facilities in countries (2008–2012)

Countries such as Germany, Poland, the United Kingdom, France and Italy, which have many large facilities, contribute the most to total damage costs. However, the ordering of countries changes significantly if damage costs are corrected to reflect the output of national economies. Emissions from a number of eastern European countries (Bulgaria, Romania, Estonia and Poland) are then more important.

Absolute costs caused



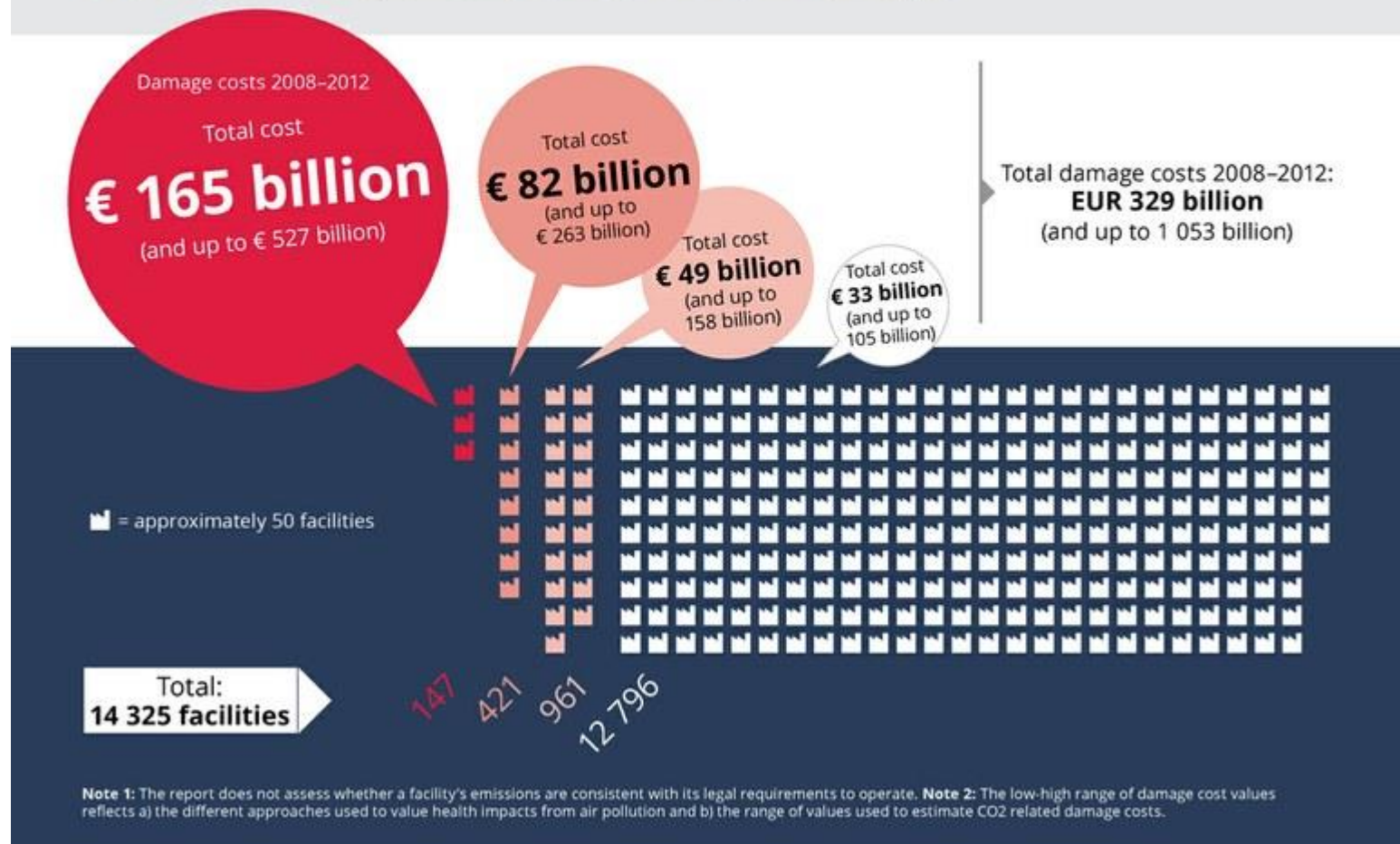
Costs caused relative to GDP



Note 1: The report does not assess whether a facility's emissions are consistent with its legal requirements to operate. **Note 2:** The low-high range of damage cost values reflects a) the different approaches used to value health impacts from air pollution and b) the range of values used to estimate CO₂ related damage costs.

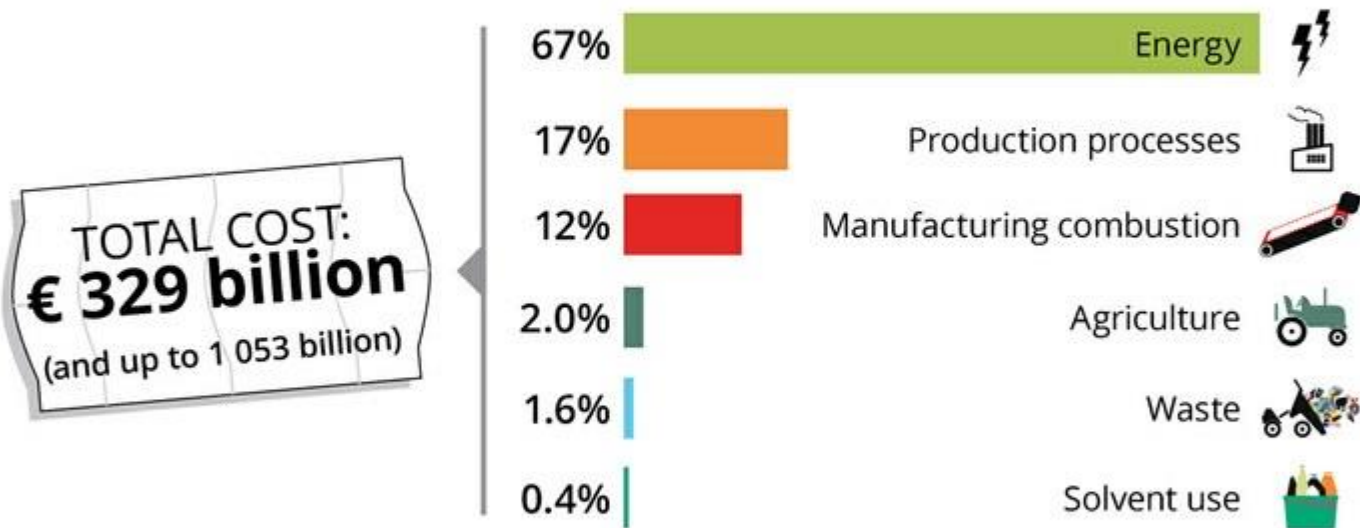
1% מהמפעלים אחראים ל 50% מהנזק

Health and environmental costs of air pollution from industrial facilities in Europe
1 % of plants responsible for 50 % of the damages



נזק לפי סקטור תעשייתי 2008-2012

Health and environmental costs of air pollution from industrial facilities in Europe
Damage costs by industrial sector (2008-2012)



Note 1: Sectors are based on information reported to the European Pollutant Release and Transfer Register (E-PRTR). The E-PRTR Regulation (EU, 2006) requires only those industrial facilities with an activity rate exceeding a defined threshold and emissions exceeding pollutant-specific thresholds to report information to the register. As a result, the E-PRTR's coverage varies significantly across the different pollutants and sectors. The low-high range of damage cost values reflects a) the different approaches used to value health impacts and b) the range of values used to estimate CO₂ related damage costs. **Note 2:** The low-high range of damage cost values reflects a) the different approaches used to value health impacts from air pollution and b) the range of values used to estimate CO₂ related damage costs.

נזק לפי מזהם 2012

Health and environmental costs of air pollution from industrial facilities in Europe

Damage costs by pollutant in 2012



Note: The low-high range of damage cost values reflects a) the different approaches used to value health impacts from air pollution and b) the range of values used to estimate CO₂ related damage costs.